

AeolusChimes.com

"We can't control the wind, but we can direct the sail"

Aeolus (pronounced AY-o-lus) Wind Chimes produces the best value wind chimes on the market. We have designed the best quality chimes that produce the most pleasant tones. Hand crafted in the United States, these chimes are made to look elegant and designed for durability.

Most wind chimes are built for 6-8 mph sustained wind speed. Aeolus wind chimes take into consideration the wide variation in wind speeds. Some locations get higher velocity wind or more varying wind speed.

We can't control wind, but we can direct the sail... Our chimes have an adjustable striker position that allows you to have control over the pendulum effect to a certain degree. By changing the length of the pendulum (the distance from the striker to the pivot, or attachment point), the inertia required to move the striker can be changed. For those blustery winds, the striker can even be removed from the chain and mounted onto the down-rod to remain stationary - the wind moving the chime tubes will cause them to come in contact with the stationary striker to make the tone. Those who have had wind chimes before know they actually become "annoyingly noisy" on those very windy days.

We don't tie knots! All of our chimes are assembled using corrosion resistant plated metal chain or plated metal cable. The most advanced fiber cord is still prone to rot and decay from the elements and UV rays, as well as abrasion from metal chime tubes. Our materials are chosen not only to withstand harsh environments, but to add a distinctive beauty to our chimes.



Aeolus is the *Controller of the Winds* in Greek mythology.



What makes Aeolus Wind Chimes stand apart from others.

- Low profile design - better chime with longer chime tubes that take up less vertical space (4"-6" less on average - see side note).
- Elegant look of solid hardwood chime support.
- Unique design featuring aluminum striker support down rod.
- Elegance and durability of plated metal chain or metal cable for all hanging components.
- Adjustable / removable / interchangeable wind sail and striker.
 - Wind sail can be easily detached for custom engraving.

Myth: the center of the tube is the best location to strike the chime tube.

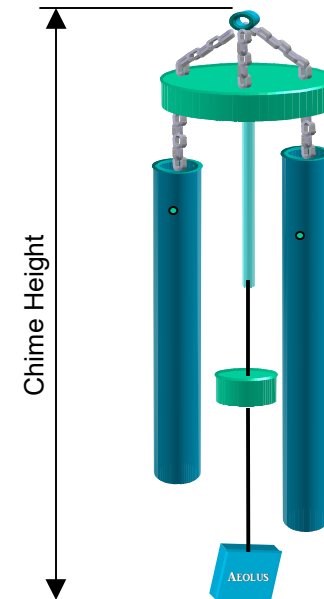
Fact: the very end of the tube is the optimal position to strike the chime tube. However, there is very little, if any, noticeable difference.

About chime height measurement

All manufacturers measure the height of their wind chimes from the top of the hang point to the bottom of the sail. A taller chime does not mean that it is better than another. The diameter, thickness, and type of material of the chime tube determines most of a chime's tonal quality, while the length of the tube determines the pitch of the tone. Lower tones sound more "bell-like" and are generally more pleasing to most individuals.

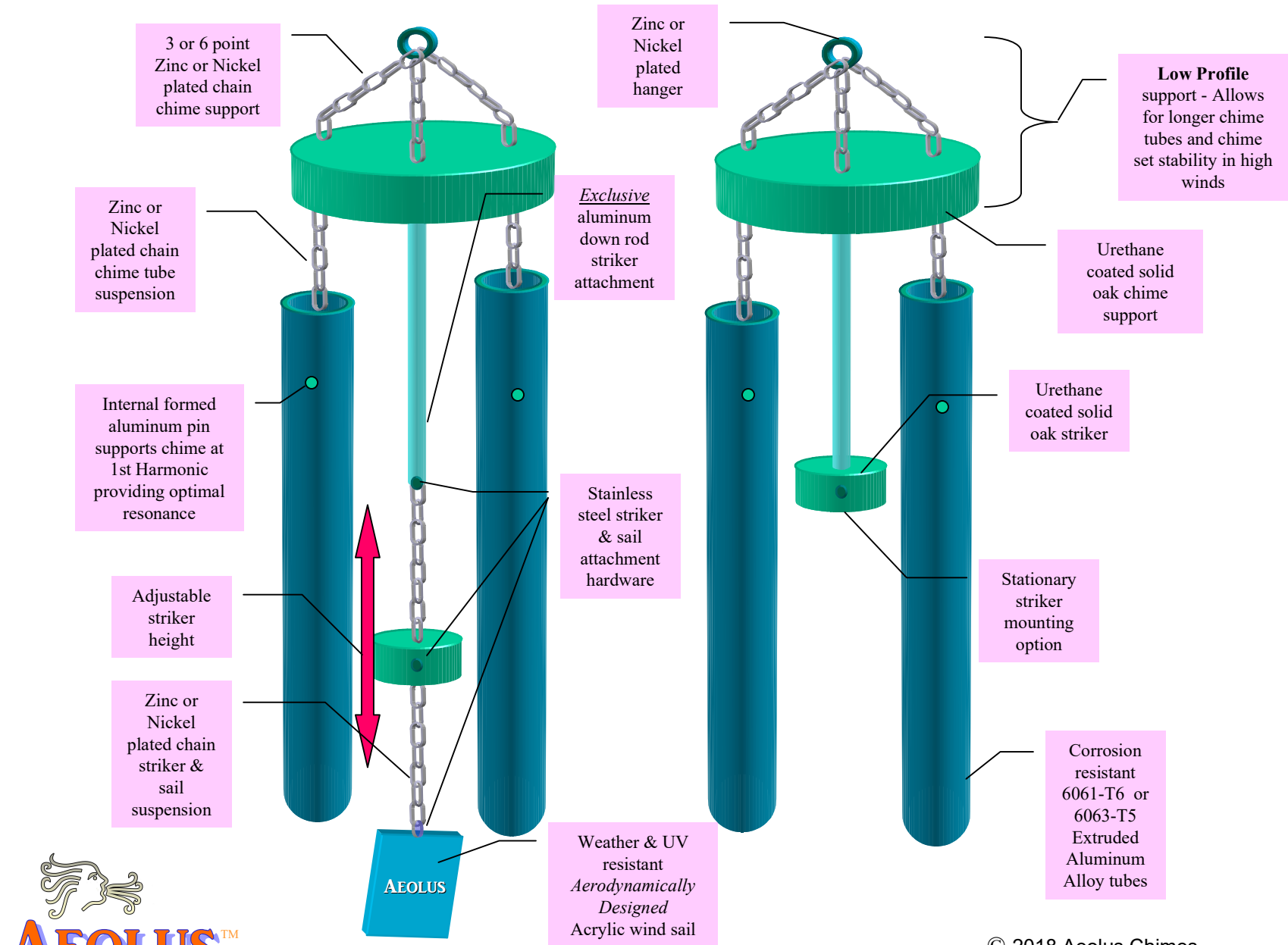
Our more compact vertical design allows you to choose a lower tone chime that will fit in more places. A popular spot for wind chimes are on a porch. Many of our chimes can be hung on a porch and the wind sail will still be above the height of the porch railing.

On average, the tone of our chimes compare to other manufacturers' chimes that are 4"- 6" longer.



Eurus & Notus series Aluminum Chimes

Engineered for lasting beauty



© 2018 Aeolus Chimes



Wind chimes made from larger diameter and thicker tubes have a more rich, longer sounding tone.

Longer tubes produce lower frequency notes .

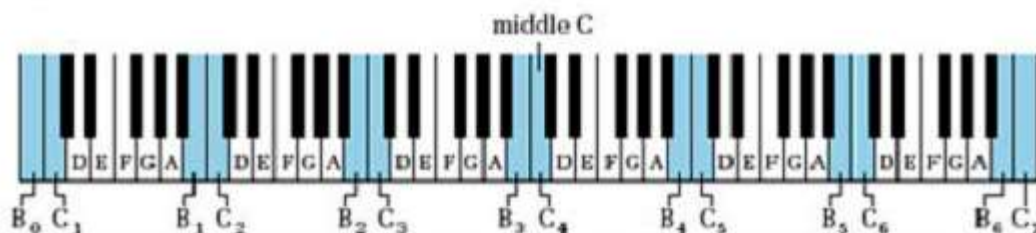
Chime Tones

Most chime manufacturers that list the individual chime notes do not usually identify the octave or note frequency.

We identify all of our chimes using the Scientific Pitch Notation.

This not only tells you the chime's "note", but also in what octave.

This is very important for you to know what tones your chimes will create.



SPN Note	Freq Hz	SPN Note	Freq Hz
C3	130.8	C5	523.3
C [#] /D ^b	138.6	C [#] /D ^b	554.4
D3	146.8	D5	587.3
D [#] /E ^b	155.6	D [#] /E ^b	622.3
E3	164.8	E5	659.3
F3	174.6	F5	698.5
F [#] /G ^b	185.0	F [#] /G ^b	740.0
G3	196.0	G5	784.0
G [#] /A ^b	207.7	G [#] /A ^b	830.6
A3	220.0	A5	880.0
A [#] /B ^b	233.1	A [#] /B ^b	932.3
B3	246.9	B5	987.8
C4	261.6	C6	1,046.5
C [#] /D ^b	277.2	C [#] /D ^b	1,108.7
D4	293.7	D6	1,174.6
D [#] /E ^b	311.1	D [#] /E ^b	1,244.5
E4	329.6	E6	1,318.5
F4	349.3	F6	1,397.0
F [#] /G ^b	370.0	F [#] /G ^b	1,480.0
G4	392.0	G6	1,568.0
G [#] /A ^b	415.3	G [#] /A ^b	1,661.2
A4	440.0	A6	1,760.0
A [#] /B ^b	466.2	A [#] /B ^b	1,864.6
B4	493.9	B6	1,975.5



Chime Sounds

Chimes such as ours that are properly suspended from the fundamental frequency node will produce audible overtones that compliment the fundamental tone to produce a “bell-like” sound.

This is what makes the beautiful sound of a quality wind chime.

Note	Fundamental Tone (Hz)	1st Overtone (Hz)	2nd Overtone (Hz)	3rd Overtone (Hz)	4th Overtone (Hz)	Note	Fundamental Tone (Hz)	1st Overtone (Hz)	2nd Overtone (Hz)	3rd Overtone (Hz)	4th Overtone (Hz)
C3	130.8	360.4	706.4	1,168	1,745	C5	523.3	1,442	2,826	4,673	6,981
C#/D ^b	138.6	381.8	748.4	1,238	1,849	C#/D ^b	554.4	1,527	2,994	4,951	7,396
D3	146.8	404.4	792.7	1,311	1,958	D5	587.3	1,618	3,171	5,245	7,835
D#/E ^b	155.6	428.7	840.2	1,390	2,076	D#/E ^b	622.3	1,714	3,360	5,557	8,301
E3	164.8	454.0	889.9	1,472	2,198	E5	659.3	1,816	3,560	5,888	8,795
F3	174.6	481.1	942.9	1,559	2,329	F5	698.5	1,924	3,772	6,238	9,318
F#/G ^b	185.0	509.7	999.0	1,652	2,468	F#/G ^b	740.0	2,039	3,996	6,608	9,872
G3	196.0	540.0	1,058	1,750	2,615	G5	784.0	2,160	4,234	7,001	10,459
G#/A ^b	207.7	572.2	1,122	1,855	2,771	G#/A ^b	830.6	2,288	4,485	7,417	11,080
A3	220.0	606.1	1,188	1,965	2,935	A5	880.0	2,424	4,752	7,858	11,739
A#/B ^b	233.1	642.2	1,259	2,082	3,110	A#/B ^b	932.3	2,568	5,034	8,325	12,437
B3	246.9	680.2	1,333	2,205	3,294	B5	987.8	2,721	5,334	8,821	13,177
C4	261.6	720.7	1,413	2,336	3,490	C6	1,047	2,883	5,651	9,345	13,960
C#/D ^b	277.2	763.7	1,497	2,475	3,698	C#/D ^b	1,109	3,054	5,987	9,901	14,790
D4	293.7	809.1	1,586	2,623	3,918	D6	1,175	3,236	6,343	10,489	15,669
D#/E ^b	311.1	857.1	1,680	2,778	4,150	D#/E ^b	1,245	3,429	6,720	11,113	16,602
E4	329.6	908.1	1,780	2,943	4,397	E6	1,319	3,632	7,120	11,774	17,589
F4	349.3	962.3	1,886	3,119	4,660	F6	1,397	3,849	7,544	12,475	18,636
F#/G ^b	370.0	1,019	1,998	3,304	4,936	F#/G ^b	1,480	4,077	7,992	13,216	19,743
G4	392.0	1,080	2,117	3,501	5,229	G6	1,568	4,320	8,467	14,002	20,917
G#/A ^b	415.3	1,144	2,243	3,709	5,540	G#/A ^b	1,661	4,577	8,970	14,835	22,160
A4	440.0	1,212	2,376	3,929	5,870	A6	1,760	4,849	9,504	15,717	23,478
A#/B ^b	466.2	1,284	2,517	4,163	6,219	A#/B ^b	1,865	5,137	10,069	16,651	24,874
B4	493.9	1,361	2,667	4,411	6,589	B6	1,976	5,443	10,668	17,641	26,353

AEOLUS WIND CHIMES

Eurus Series



Series	Eurus		
Model	310S-*	310B-*	310L-*
Overall Height (inches)	34	40	52
Diameter (inches)	5 1/8		
Chime Material	Aluminum		
Tube Diameter (inch)	1.00		
Number of Chimes	6		
Longest Tube (inches)	18 5/16	24 7/16	36 5/8
Weight (lbs.)	3	4	7
Notes	F5	G4	F3
	G5	A#4	G3
	A#5	C5	A#3
	C6	D5	C4
	D6	E5	D#4
	E6	F#5	F4
Available Finishes	Item Number		
	310S-P	310B-P	310L-P
	310S-E	310B-E	310L-E
	310S-R	310B-R	310L-R
	310S-A	310B-A	310L-A
	310S-O	310B-O	310L-O
	310S-G	310B-G	310L-G
	310S-C	310B-C	310L-C

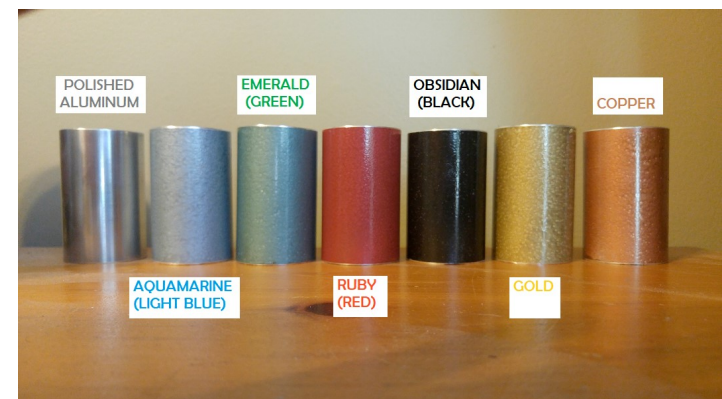
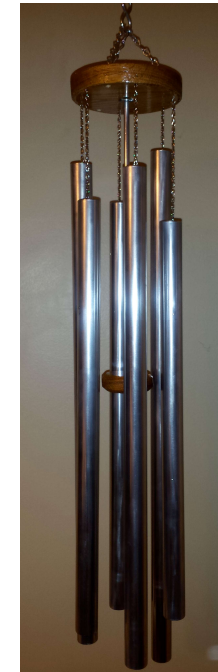
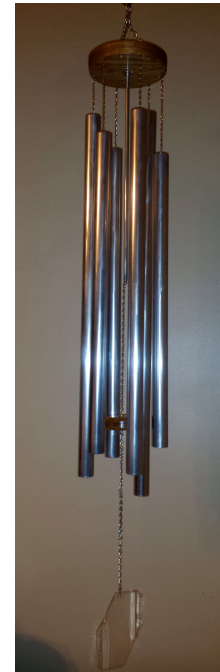
34" Chime 310S

40" Chime 310B

52" Chime 310L



AeolusChimes.com



Eurus is god of the east wind in Greek mythology.

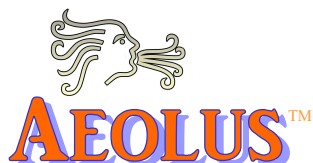
Series	Notus			
Model	500C-*	510S-*	510B-*	510L-*
Overall Height (inches)	44	43	55	64
Diameter (inches)	6 5/8			
Chime Material	Aluminum			
Tube Diameter (inch)	1.50			
Number of Chimes	6			
Longest Tube (inches)	26 3/16	26	36 5/16	42
Weight (lbs.)	7	9	12	14
Notes	C5	C5	C4	G3
	D5	D5	D4	A3
	E5	F5	E4	B3
	F#5	G5	F#4	C#4
	G#5	A5	A4	D#4
	B5	C6	B4	F4
Available Finishes	Item Number			
	500S-P	510S-P	510B-P	510L-P
	500S-E	510S-E	510B-E	510L-E
	500S-R	510S-R	510B-R	510L-R
	500S-A	510S-A	510B-A	510L-A
	500S-O	510S-O	510B-O	510L-O
	500S-G	510S-G	510B-G	510L-G
	500S-C	510S-C	510B-C	510L-C

44" Chime 500C

43" Chime 510S

55" Chime 510B

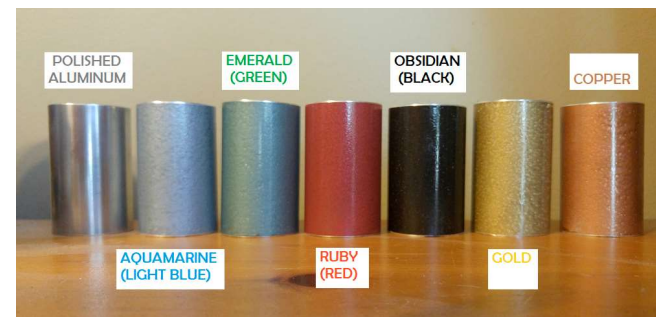
64" Chime 510L



Notus is god of the south wind.in Greek mythology.

AEOLUS WIND CHIMES

Notus Series



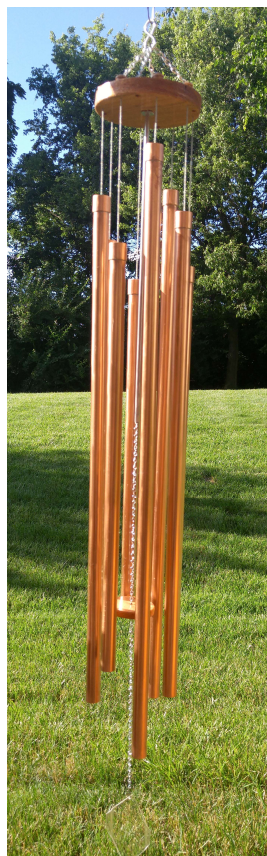
AeolusChimes.com



AEOLUS WIND CHIMES

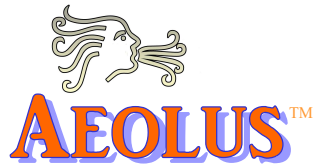
Zephyrus Series

Series	Zephyrus
Model	240B-*
Overall Height (inches)	48
Diameter (inches)	6
Chime Material	Copper
Tube Diameter (inch)	0.875
Number of Chimes	8
Longest Tube (inches)	33 1/4
Weight (lbs.)	11
Notes	C3
	D#3
	F3
	G3
	A#3
	C4
	D#4
	F4
Available Finishes	Item #
Clear Gloss	240B-F



Copper wind chimes are not only elegant, but produce a *more pronounced timbre* than aluminum, and are not as loud. Our copper chimes are polished and then coated to retain their bright copper color.

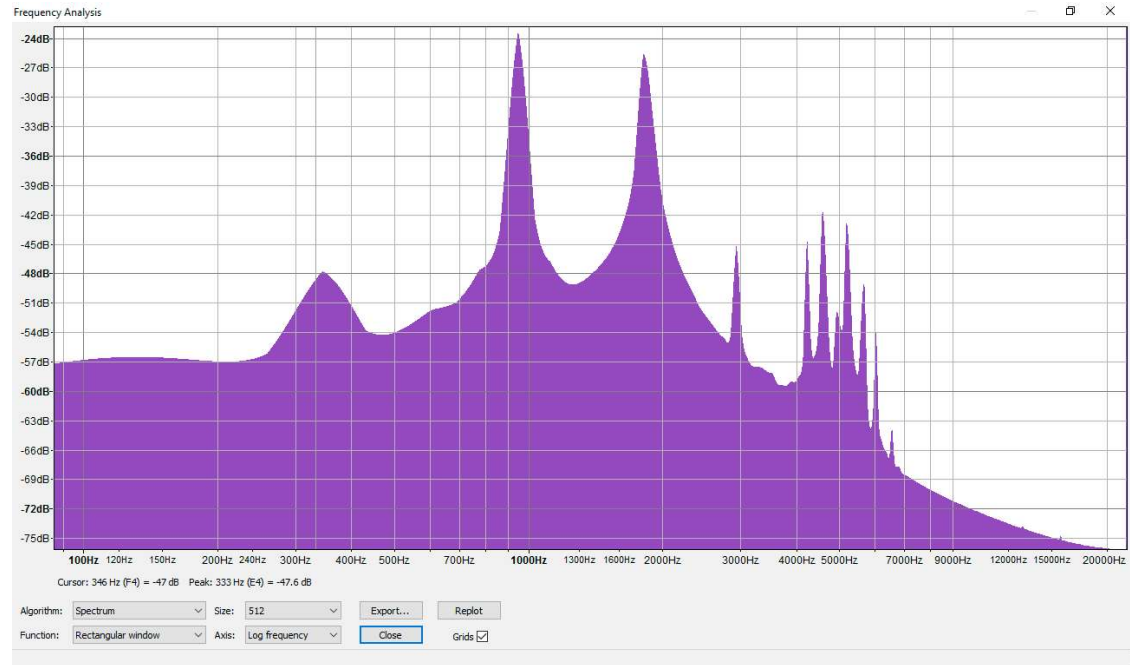
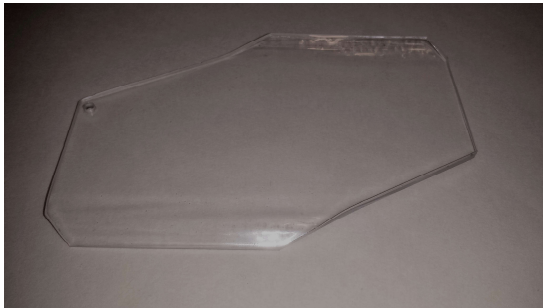
Zephyrus is god of the west wind.in Greek mythology.



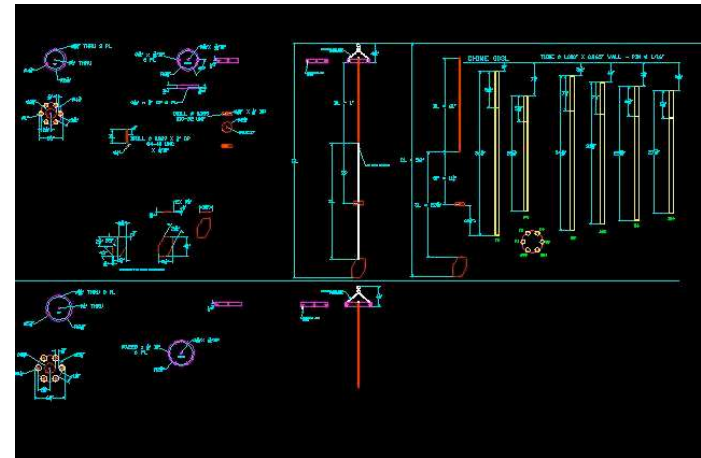
Superior Craftsmanship

Tones from our chimes are analyzed for proper tuning to the 1st harmonic (fundamental frequency) and for clean, clear overtones to provide the *best possible sound and a long sustaining tone.*

Countless hours were spent on the design of the wind sail for optimal aerodynamic shape, surface area, and weight pairing with the striker. Our goal was to get the best strike tone performance in a wider range of wind speeds.



Computer Aided Design (CAD)
Each component is precisely designed.
Our chimes are crafted to exacting standards.



AEOLUS WIND CHIMES

Current Catalog

AeolusChimes.com

Series	Eurus			Notus				Zephyrus
Model	310S-*	310B-*	310L-*	500C-*	510S-*	510B-*	510L-*	240B-*
Overall Height (inches)	34	40	52	44	43	55	64	48
Diameter (inches)	5 1/8			6 5/8				6
Chime Material	Aluminum			Aluminum				Copper
Tube Diameter (inch)	1.00			1.50				0.875
Number of Chimes	6			6				8
Longest Tube (inches)	18 5/16	24 7/16	36 5/8	26 3/16	26	36 5/16	42	33 1/4
Weight (lbs.)	4	5	6	7	9	12	14	11
Notes	F5	G4	F3	C5	C5	C4	G3	C3
	G5	A [#] 4	G3	D5	D5	D4	A3	D [#] 3
	A [#] 5	C5	A [#] 3	E5	F5	E4	B3	F3
	C6	D5	C4	F [#] 5	G5	F [#] 4	C [#] 4	G3
	D6	E5	D [#] 4	G [#] 5	A5	A4	D [#] 4	A [#] 3
	E6	F [#] 5	F4	B5	C6	B4	F4	C4
								D [#] 4
							F4	

Price									
Chime Finish	Finish Code	310S-*	310B-*	310L-*	500C-*	510S-*	510B-*	510L-*	240B-*
Polished Aluminum	-P	\$ 159.95	\$ 179.95	\$ 199.95	\$ 209.95	\$ 219.95	\$ 259.95	\$ 296.95	
Emerald (Green)	-E	\$ 169.95	\$ 194.95	\$ 217.95	\$ 209.95	\$ 235.95	\$ 279.95	\$ 318.95	
Ruby (Red)	-R								
Aquamarine (Blue)	-A								
Obsidian (Black)	-O								
Gold	-G								
Copper	-C								
Clear Gloss Finish	-F								



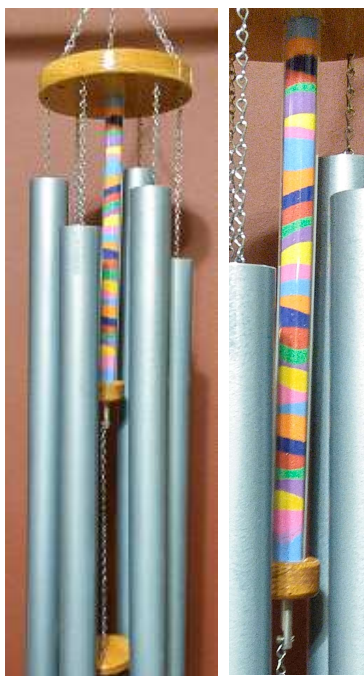
AEOLUS WIND CHIMES

Down Rod Adornment

*Give your Aeolus Chime
Set a distinctive touch*

DOWNROD ADORNMENT		Chime Set Model#-Finish Code#-Downrod Add-on#							
Filler	Code	310S-_*	310B-_*	310L-_*	500C-_*	510S-_*	510B-_*	510L-_*	240B-_*
Green Phosphorescent Glass	-3	\$ 11.00	\$ 12.00	\$ 13.00	\$ 12.00	\$ 12.00	\$ 13.00	\$ 13.00	\$ 13.00
Complementary Color Sand	-2	\$ 10.00	\$ 11.00	\$ 12.00	\$ 11.00	\$ 11.00	\$ 12.00	\$ 12.00	\$ 12.00
Sand Rainbow	-9	\$ 15.00	\$ 16.00	\$ 18.00	\$ 16.00	\$ 16.00	\$ 18.00	\$ 18.00	\$ 17.00

500C-A-9
(Sand Rainbow)



500C-O-3
(Green Phosphorescent Glass)



500C-C-3
(Green Phosphorescent Glass)



500C-O-2
(Complementary Color Sand)





AEOLUS CHIME CONTROL

Introducing The “Windless” Indoor Wind Chime

Your Chimes Indoors Year-round



Simply Hang your chime, unclip the wind sail, and clip on the “windless sail”.

AeolusChimes.com

Model AC1L-44 - for any wind chime 34” - 44”
Ideal for our Chimes 310S, 310B, 510S, & 500C
Price: \$289.95
13-3/4” L x 7-1/8” D x 47-1/4”H

Model AC1B - base unit only. Place the base unit on a table and hang your chime (any size) from the ceiling above the unit.
Price: \$239.95
7-1/2” L x 5-1/2” D x 2-1/4”H

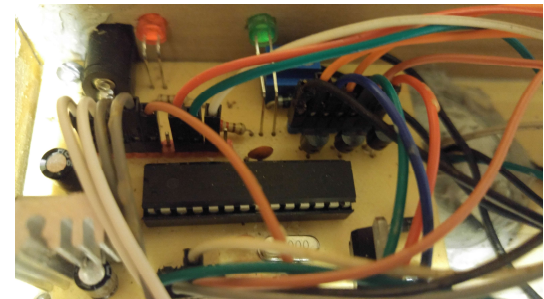
Will work with any chime. Even if you don’t own an Aeolus wind chime, you can enjoy your favorite chime indoors. If your wind sail is attached by a chord, untie the sail and attach our windless sail. See measurement guide for details.

Powered by a rare-earth magnet and an electronically controlled electromagnet.



18 bright RGB LEDs light up your chime set with an infinite color pallet and adjustable brightness.

Model AC1L-55 - for any wind chime 45” - 54”
Ideal for our Chimes 310L, 510B, & 240B
Price: \$299.95
13-3/4” L x 7-1/8” D x 57-1/4”H



Microprocessor controlled to simulate a range of wind speeds, from a gentle breeze to blustery gusts. Fully adjustable control.